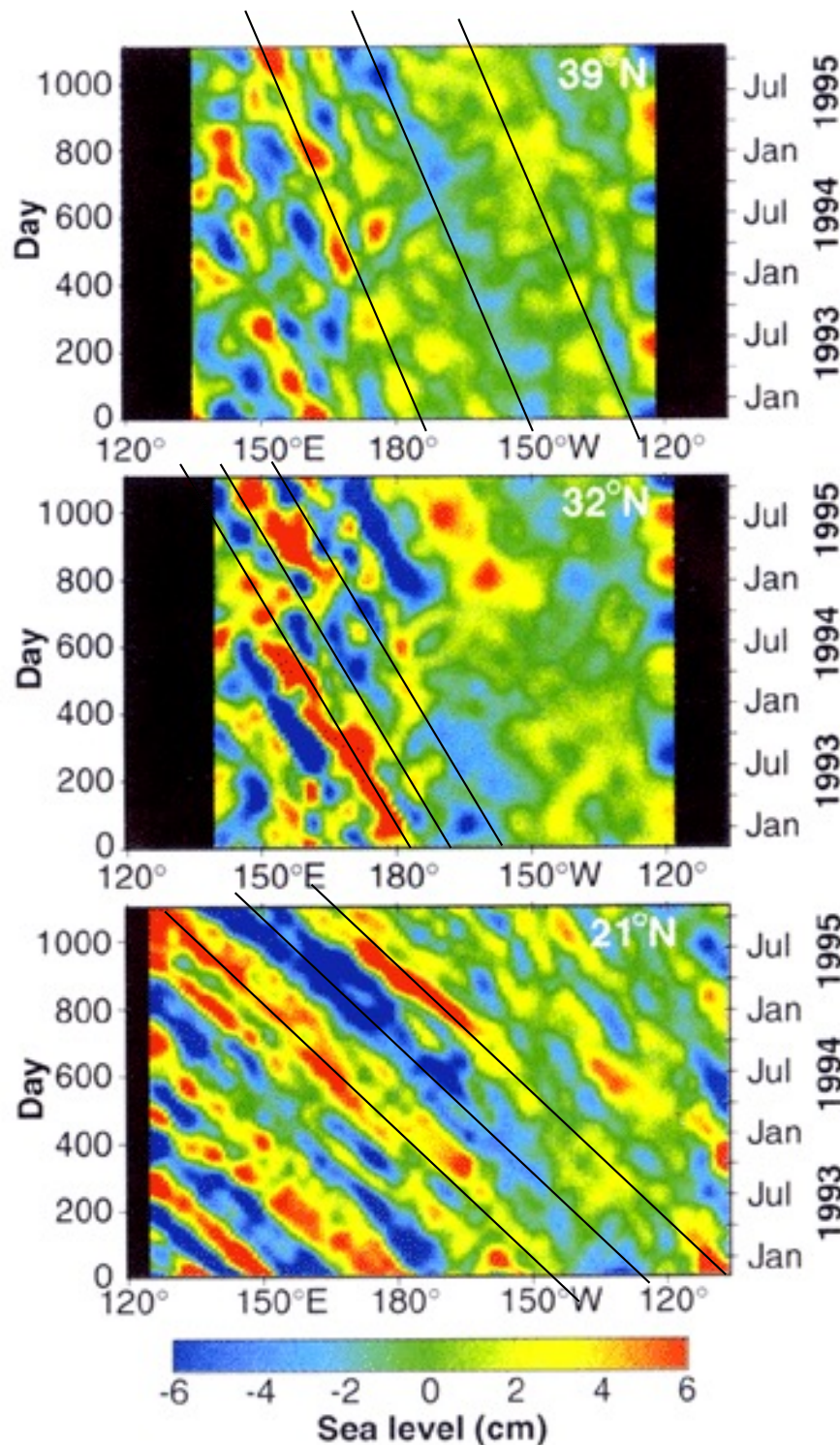


Mid-Latitude Rossby Waves from Satellite Altimeter

39 degrees North

32 degrees North

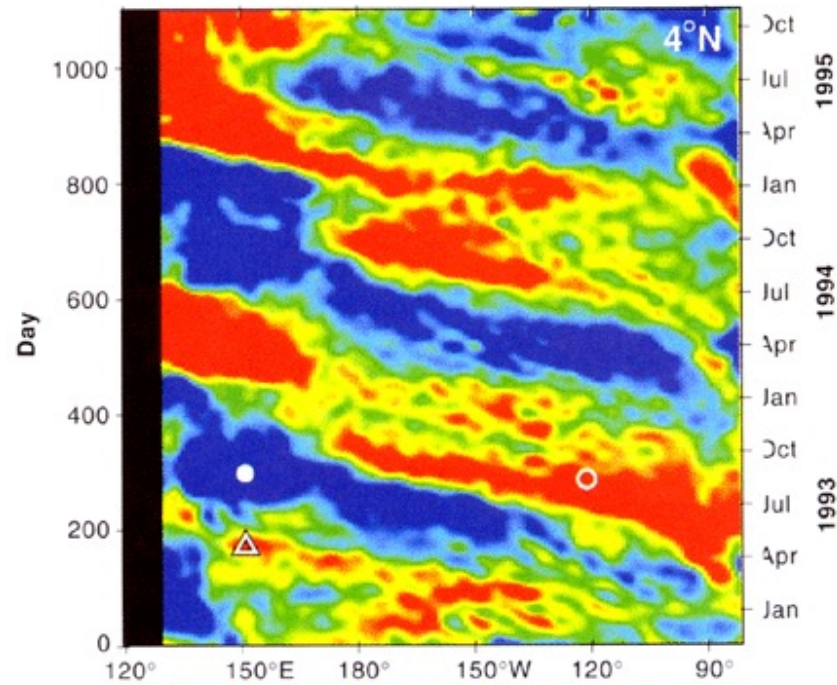
21 degrees North



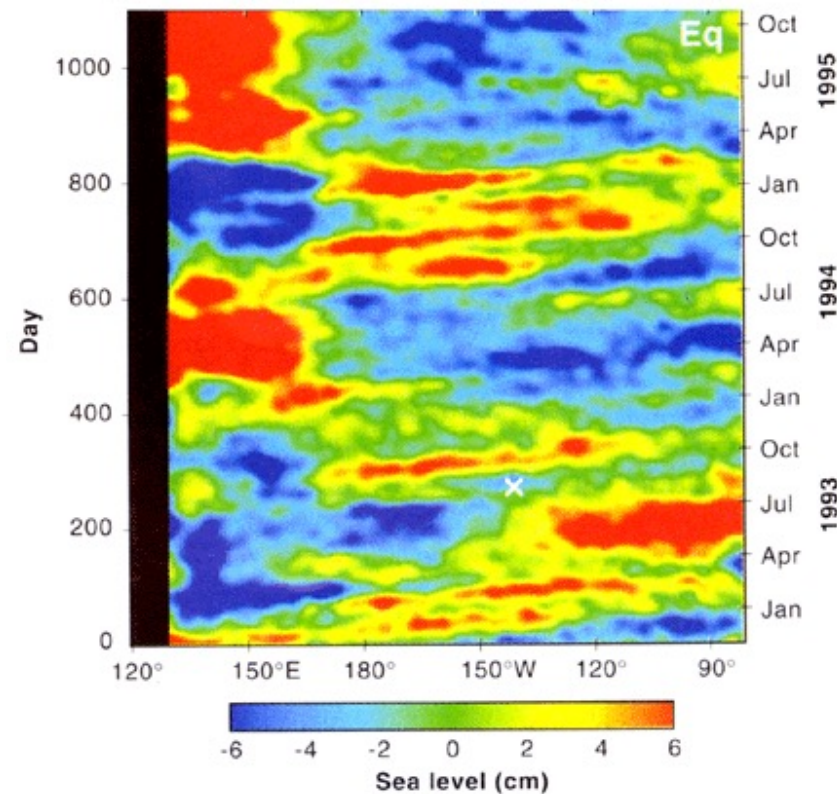
from Chelton and Schlax (1996)

Equatorial Rossby Waves from Satellite Altimeter

2 degrees North

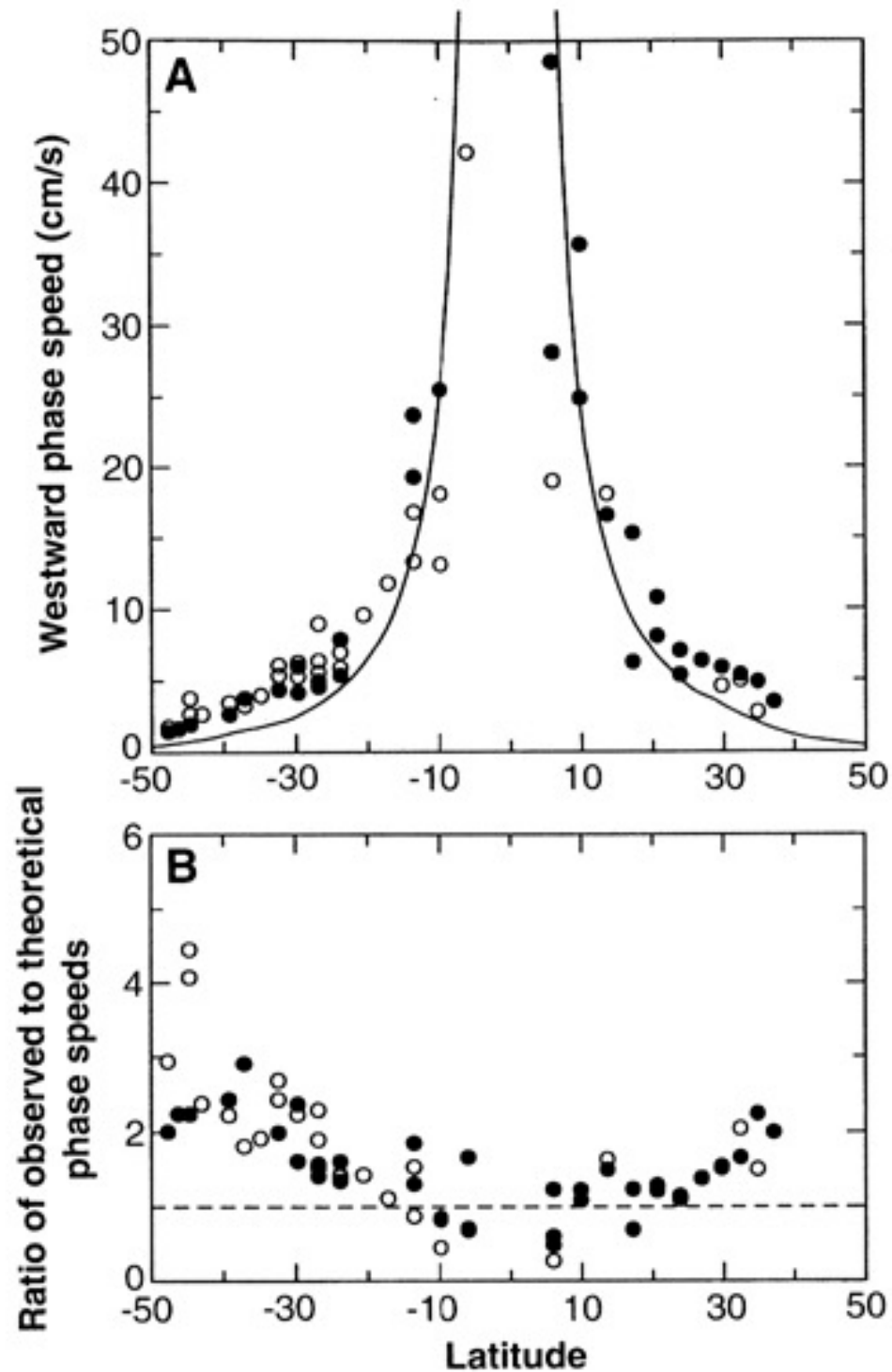


0 degrees North



from Chelton and Schlax (1996)

Rossby Wave: Observations vs. Theory



from Chelton and Schlax (1996)